

How Do I...?

An Occasional Series

This week: Operating CW -- Manual Key Settings for the Icom IC-7300

I recently bought a new Icom IC-7300 transceiver (a truly innovative and exceptional piece of gear!). Quickly, I wanted to introduce it to my veteran Vibroplex Champion bug and start making some CW QSOs. Like most settings with the IC-7300, the color touchscreen interface or a few physical knobs provided the navigation. The manual (available in basic and full versions) can be useful with this.

IC-7300 manual key set-up:

The IC-7300 accommodates a manual key, "bug" and cootie with:

- 1.) A physical connection on the rear panel for a standard 1/4" phono plug from the key's terminals;
- 2.) A software setting to change the "key type" to "straight" (from the touchscreen's MENU -> KEYS -> EDIT/SET -> CW-KEY SET -> toggle the KEY-TYPE setting to STRAIGHT).

IC-7300 other CW settings

For CW operation, remember the VOX/BK-IN setting. This sets the delay time from key-up back to receive mode (irrelevant if you're operating QSK, full break-in). Press VOX/BK-IN. The BKIN default delay setting of 7.5d seems adequate for typical CW speeds, but I turn the mini-tuning dial to get the max delay of 13.0d when QSOing with a rising CW Star!

• • • — • — (SK = End of Conversation)

The IC-7300 has a virtual keyer and CW memory banks for machine-generated code operation. One of those memory banks features an incrementing serial number function, which is useful when making CW contest QSOs. As a "purist" I'm still generating and decoding my own CW thank you very much, but I like to learn new things, and anticipate embracing machine-generated code and automated contest logging to maximize scoring.

Whether from your own fist or a machine, CW is fun! For now, I'll be on the air with my good ol' Vibroplex Champion bug ... would you care to join us?

"YES, CW is for ME!"

John Luthy
WA3KCP

Editor's Note: Please continue to the next page where the Author has provided some photos.



Photo 1 J-38 Straight Key for sending Morse Code

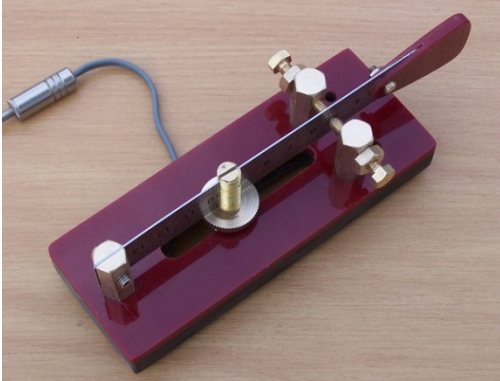


Photo 2 Sideswiper key, also known as a Cootie

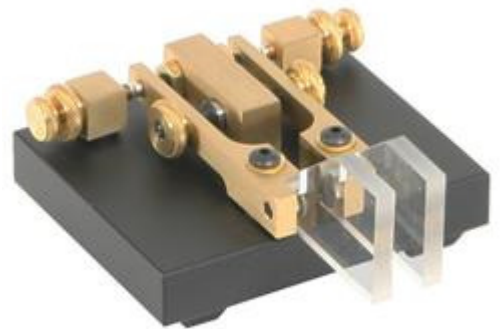


Photo 3 Electronic Keyer Paddle



Photo 4 Vibroplex Semi-Automatic Key, also known as a BUG. (See the Vibroplex logo)